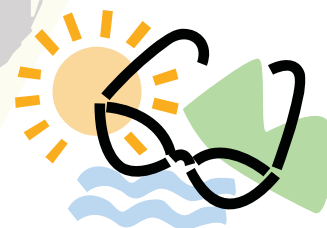


Seattle Bridge Unit 446

# SUNTAN SECTIONAL

August 13-15 2010

Shoreline Community College  
16101 Greenwood Avenue N  
Shoreline WA 98133-5696



## Event Schedule

### Friday, 1:30 pm

199'er Pairs (Single Session)  
Stratified Open Pairs (Single Session)

### Saturday, 1 pm

199'er Pairs (Single Session)  
NLM Pairs\* (1st of 2 Sessions)  
Stratified Open Pairs\*\* (1st of 2 Sessions)

\* Stratification for NLM (Non-Life Master) Pairs will be based on attendance

\*\* Stratification for Saturday Open Pairs is 0-750, 750-2000, 2000+  
Single session entries accepted for 2 session events

### Sunday, 10:30 am

199'er Swiss (Single Session)  
Stratified Swiss (1st of 2 Sessions)

### TBA

199'er Swiss (Single Session)  
Stratified Swiss (2nd of 2 Sessions)

**Lunch will NOT be provided; sufficient time will be given for break**

<b>Stratification</b>	Open Pairs	0-500, 500-2000, 2000+
	199'er pairs & teams	0-50, 50-100, 100-200
	Stratified Swiss	0-500, 500-2000, 2000+

*Pair and Swiss Team stratification based on averaged MP's*

Complimentary  
treats



## NEED A PARTNER?

send an email to  
sbu446partnership@gmail.com

### Tournament chairs

Chris Moore cmoore@exchange.microsoft.com  
Ann Romeo annromeo@gmail.com



Day of  
tournament phone  
425-533-1355



Seattle, D19, ACBL websites  
<http://bridgeinseattle.org/shopcontent.asp?type=tournaments>  
<http://www.d19.org/competitions/RegSects/d19Trail10.html>  
<http://www.acbl.org/play/tournaments.html>